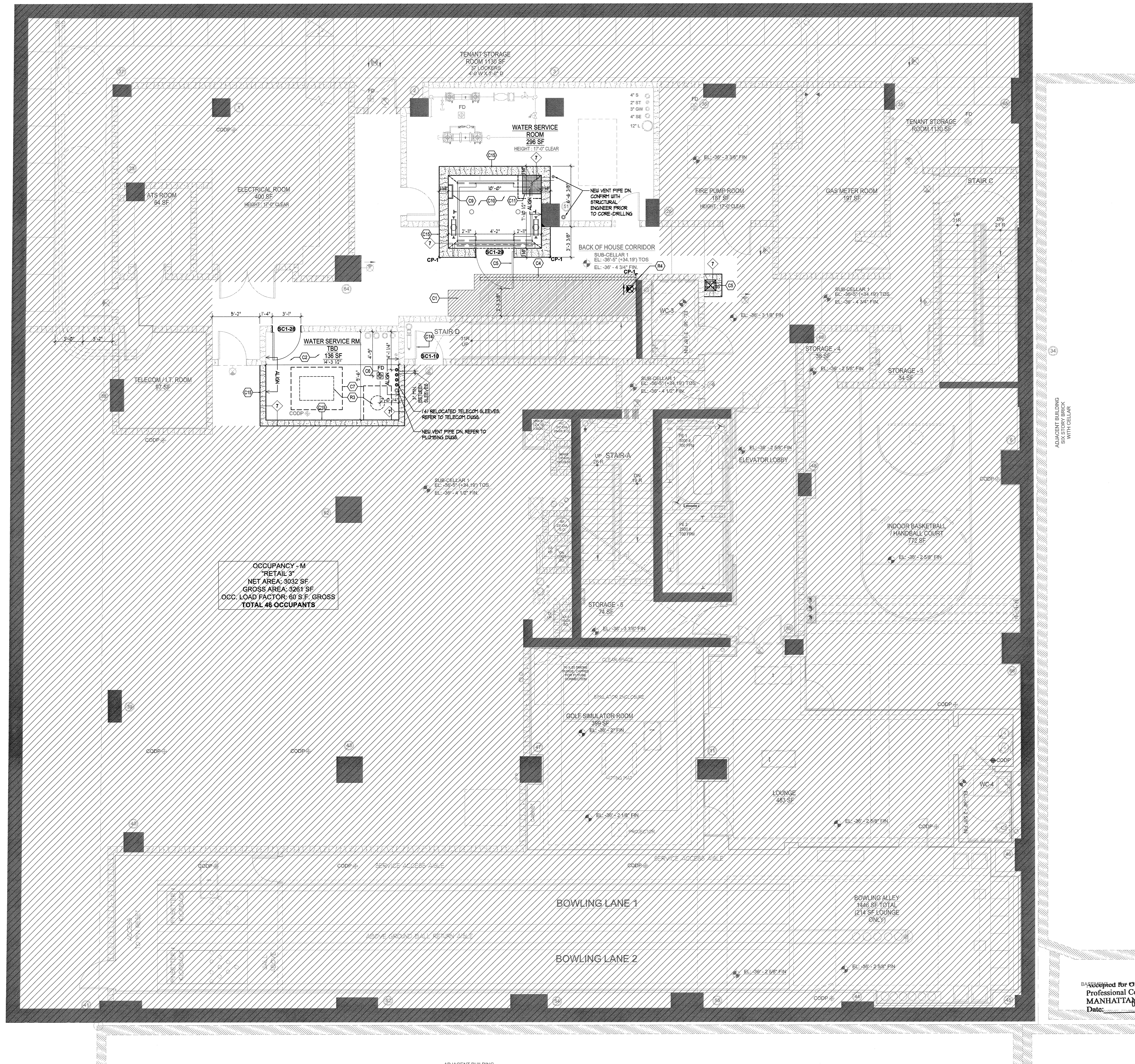
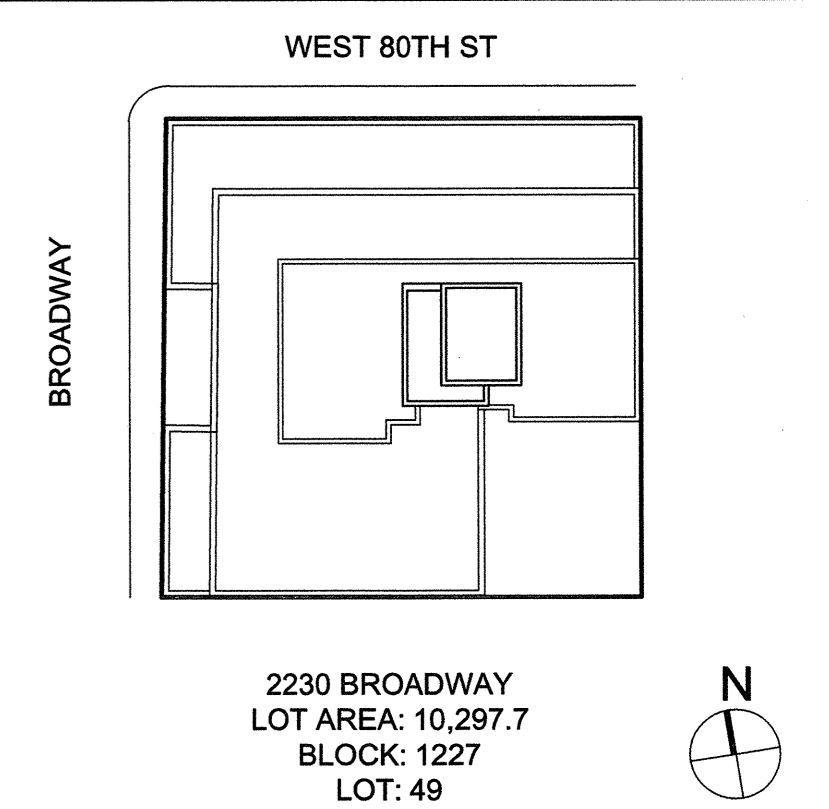


CONSTRUCTION KEY NOTES	
C	NEW CONSTRUCTION
(C1)	NEW FLOOR FINISH TO MATCH EXISTING. PROVIDE LATITE HYDROBAN WATERPROOFING MEMBRANE BELOW NEW TILED AREAS.
(C2)	90°/180° KERFLIX WATERPROOFING SYSTEM. TURN UP AT LEAST 1'-0" ON WALLS.
(C3)	NEW STEEL COLUMN AND BASE. REFER TO STRUCTURAL DRAWINGS. REFER TO 5/A-322 FOR WATERPROOFING DETAIL.
(C4)	2 HR RATED SUSPENDED WALL ENCLOSURE ABOVE. REFER TO DETAIL A/A-816.
(C5)	ZERO-CLEARANCE ELEVATOR DOOR PER BC403.9.1 EXCEPTION 3. DOOR SUB-CONTRACTOR TO COORDINATE DOOR AND HARDWARE WITH ELEVATOR ENTRANCE.
(C6)	NEW FLOOR DRAIN. REFER TO PLUMBING DRAWINGS.
(C7)	NEW 4" HIGH CONCRETE EQUIPMENT PAD. COORDINATE EXTENTS WITH PLUMBING SUB-CONTRACTOR. SEE ITEM C2 FOR WATERPROOFING INFO.
(C8)	NEW CHU DUCT SHAFT. REFER TO MECHANICAL DRAWINGS.
(C9)	PROVIDE FIT ACCESS LADDER AS REQUIRED BY ELEVATOR MANUFACTURER. LOCATION OF LADDER SHALL BE PER ELEVATOR SUB-CONTRACTOR.
(C10)	PROVIDE AQUARIUM-GREY COLOR PIT WATERPROOFING ON ALL WALLS AND FLOOR OF ELEVATOR PIT.
(C11)	ELEVATOR SUMP PIT 2'X2'X2'. PROVIDE REMOVABLE METAL BAR GRATING SUPPORTED WITH CONC. EMBEDDED ANGLES OR EQUAL.
(C12)	FIRE RATED 2 1/4" X 2 1/4" GOVERNOR ACCESS PANEL WITH PERMANENT HOISTWAY EXHAUST. REFER TO MECHANICAL DRAWINGS.
(C13)	ELEVATOR HOISTWAY EXHAUST. REFER TO MECHANICAL DRAWINGS.
(C14)	GC TO EVALUATE FEASIBILITY OF INCORPORATING ELECTRIFIED HARDWARE TO EXISTING FIRE RATED DOOR AND FRAME. REFER TO DOOR SCHEDULE AND DOOR HARDWARE. PROVIDE NEW DOOR AND FRAME IF THE INTENDED INTEGRATION IS NOT POSSIBLE. REQUEST HARDWARE SET FOR NEW DOOR FROM ARCHITECT.
(C15)	TYP NOTE FOR ALL MASONRY WALLS: TOP OF WALL SUPPORTS REQUIRED. REFER TO STRUCTURAL DRAWINGS FOR TOP OF WALL SUPPORT DETAIL. PROVIDE CERAMITICUS SPRAYED FIRE RESISTIVE MATERIAL (GRACE MONOKOTE PK-1000HS) OR APPROVED EQUAL OVER STEEL ANGLES SUPPORTING THE TOP OF WALL. THE TOP OF WALL SHALL BE FIRE STOPPED/SEALED PER UL SYSTEM NO. H-1-D-1010 OR APPROVED EQUAL.
R	RELOCATE
(R1)	RELOCATED TV. REFER TO RCP AND ELECTRICAL DRAWINGS.
(R2)	RELOCATED FLOOR DRAIN. REFER TO PLUMBING DRAWINGS.
(R3)	RELOCATED EQUIPMENT. REFER TO PLUMBING AND ELECTRICAL DRAWINGS.
(R4)	RELOCATED EXIT SIGN. REFER TO ELECTRICAL DRAWINGS.



1 SUB-CELLAR 1 FLOOR PLAN 12127 (GROSS)
SCALE: 1/4" = 1'-0"



10/15/19 DOB FILING
The Stephen B. Jacobs Group, P.C.
Architects and Planners
381 Park Avenue South
New York, N.Y. 10016
212-421-3712
© 2019

Structural Engineer:
Rosenwasser / Grossman Consulting
Engineers, P.C.
519 8th Ave, 20th Floor
New York, N.Y. 10018
212-564-2424

M.E.P. Engineer:
Stantec
475 Fifth Avenue, 12th Floor
New York, N.Y. 10017
212-330-6275

Owner:
2228 - 2236 Broadway LLC
c/o Rose Associates Inc.
777 Third Avenue, 6th Floor
New York, NY 10017
212-210-6726

DOB # 1075792921

2230 Broadway
New York, New York 10024

Drawing Title:
CONSTRUCTION: SUB CELLAR FLOOR PLAN
MARKETING: LL2

SEAL & SIGNATURE: [Signature]
DATE: 10/15/19
PROJECT: 1428
DRAWING SCALE: AS NOTED
DRAWING NO.: A-101.00
CAD REF: 01

BASED UPON FOR OPIN #1/04
Professional Certification
MANHATTAN DEC 02 2019
Date:

ADJACENT BUILDING
TWO STORY STONE,
BRICK & GLASS
WITH CELLAR

ONE STORY